

Instructions to Webinar Participants

- Event will be recorded via Zoom Webinar.
- Presentation slides will be shared through school website after the event.
- ****We seek your understanding not to record the event using your personal devices.***
- In unforeseen circumstances of a log out, please re-login to the Webinar to join the event.
- For technical support during the webinar, please use the chat feature located at the bottom of your screen.
- We seek your understanding and support for a fruitful session.

Thank you.

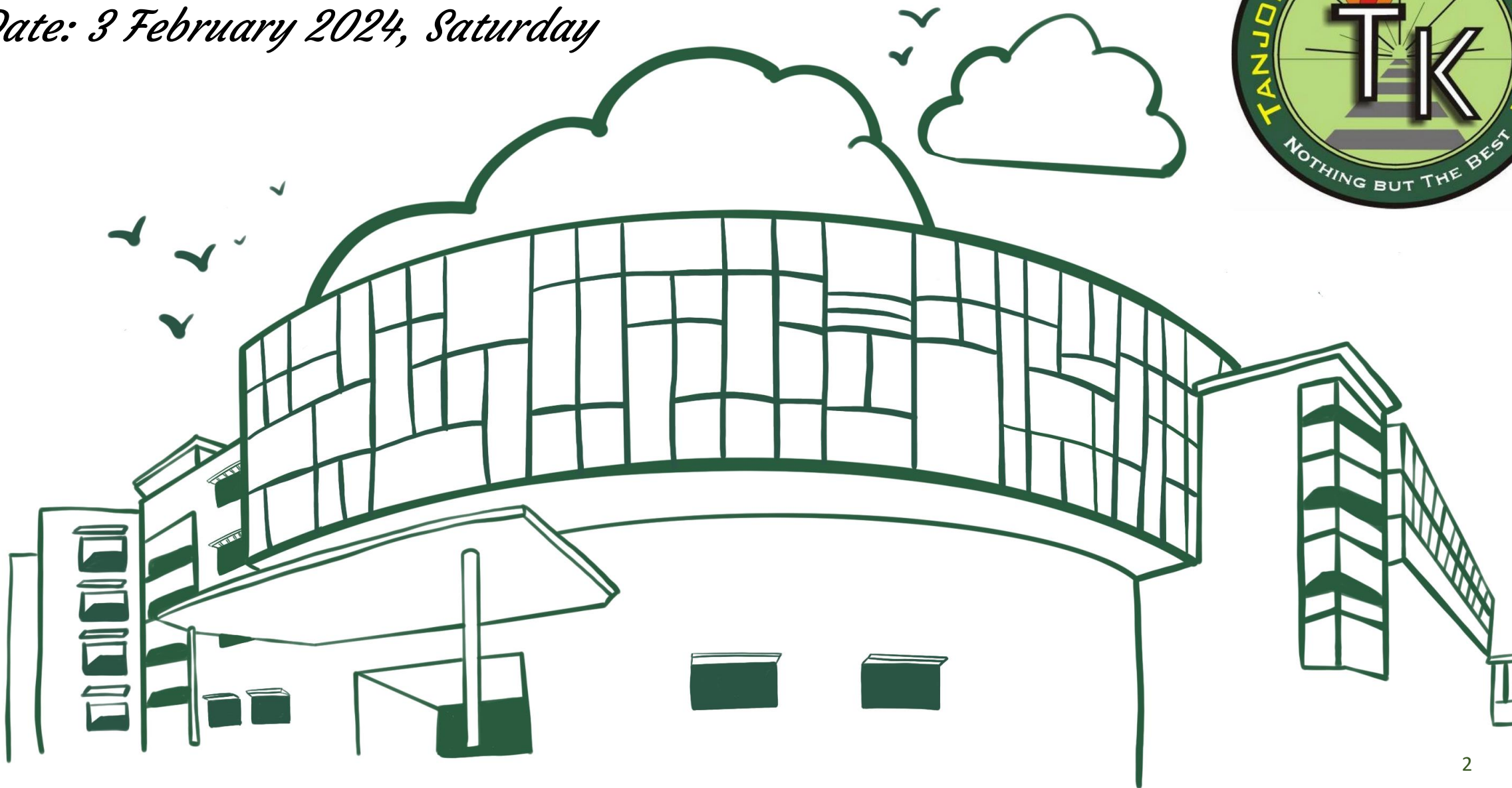


Parent Engagement 2024



Parent Engagement 2024

Date: 3 February 2024, Saturday



Instructions to Webinar Participants

- Event will be recorded via Zoom Webinar.
- Presentation slides will be shared through school website after the event.
- ****We seek your understanding not to record the event using your personal devices.***
- In unforeseen circumstances of a log out, please re-login to the Webinar to join the event.
- For technical support during the webinar, please use the chat feature located at the bottom of your screen.
- We seek your understanding and support for a fruitful session.

Thank you.



Parent Engagement 2024

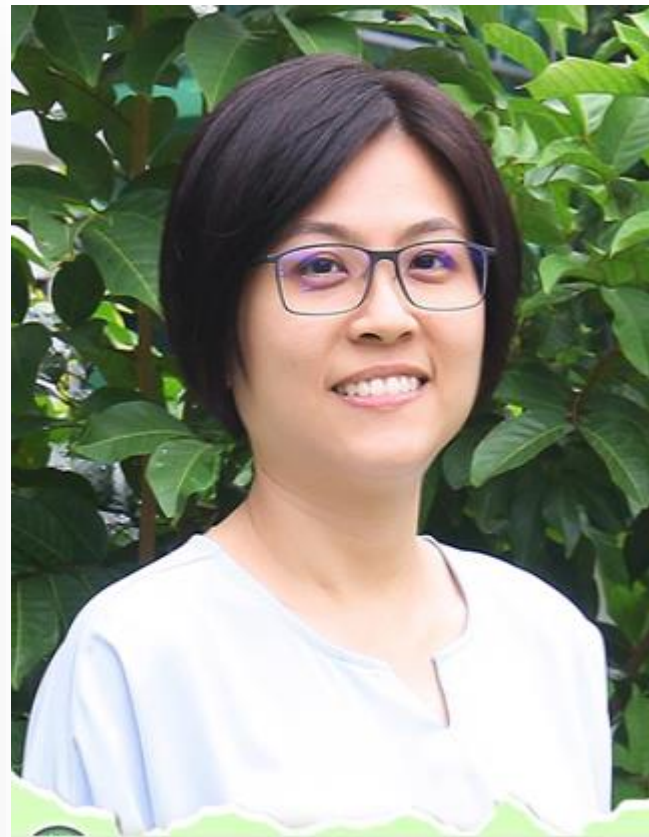
SCHOOL LEADERS



Mrs Seah Lay Tin
PRINCIPAL



Mdm Toh Leng Leng
VICE-PRINCIPAL



Miss Ong Chuxian
VICE-PRINCIPAL



Mrs Vijaya Ganesh
VICE-PRINCIPAL (Admin)

Year Head & Level Manager



Mr Ashiq Hashim
Year Head (Upper Primary)



Ms Drusilla Quek
Level Manager (Upper Primary)



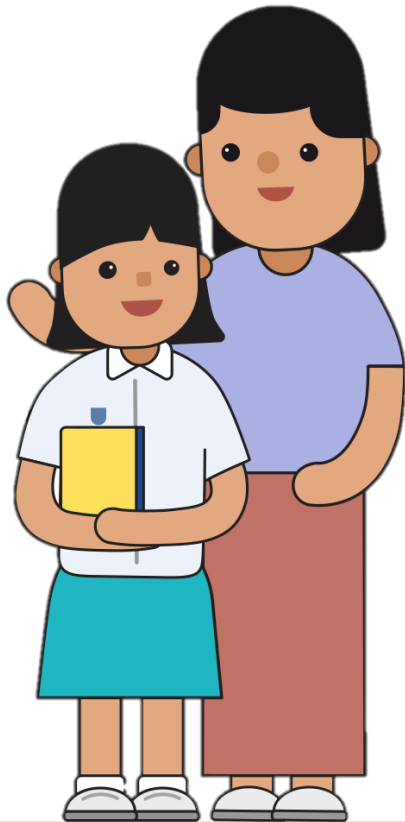
Parent Engagement 2024



Overview

How does the PSLE Scoring & S1 Posting work?

How are students posted to secondary schools?



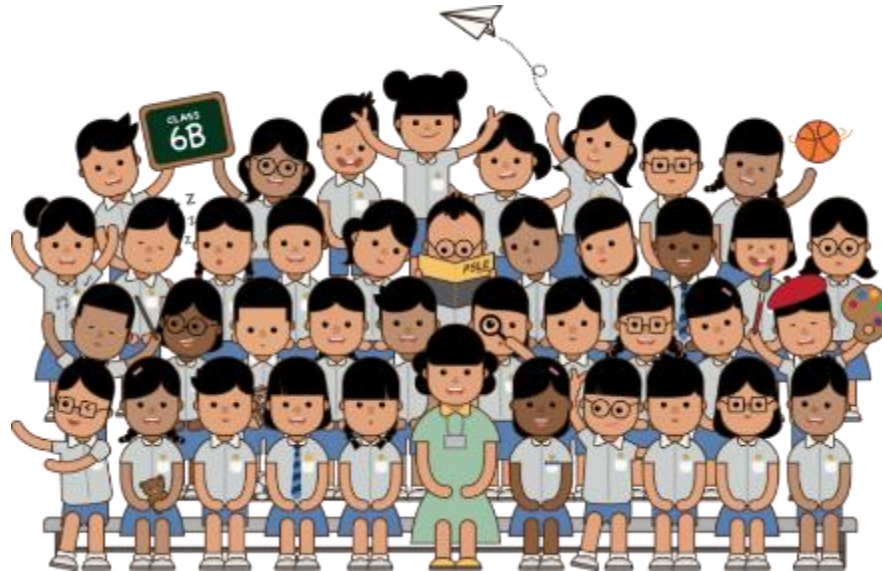
From today's session, you will walk away with...

- A better understanding of the support that your child may need in the transition journey from primary to secondary school
- Understanding Full Subject-Based Banding (Full SBB)
- Information on what to expect in secondary school



The PSLE SCORING and S1 POSTING

**SUPPORTING STUDENTS AND PARENTS IN MAKING
INFORMED SCHOOL CHOICES FOR PSLE**



© MINISTRY OF EDUCATION, COMMUNICATIONS AND ENGAGEMENT GROUP, 2023



WHAT IS THE INTENT OF THE PSLE?



A useful checkpoint at the end of primary school

A fair way to determine secondary school posting



Over the years, we have been changing the education system to help our students discover and develop their strengths, interests, abilities and talents while moving away from an over-emphasis on academic results. Our PSLE Scoring system reduces the over-emphasis on academic results by:

1

Reducing fine differentiation of students' examination results at a young age.

2

Recognising a student's level of achievement, regardless of how his/her peers have done.

3

Encouraging families to choose secondary schools holistically based on students' strengths, interests and learning needs.

WHAT ARE ACHIEVEMENT LEVELs (AL)?

WHY ARE THE BANDS UNEVEN?

- Students with similar scores in each subject are grouped into scoring bands measured in 8 ALs.
- AL bands and mark ranges are set based on the learning objectives of the curriculum, and mirror the way we learn.

When we learn something new, after some initial practice, we often find ourselves improving significantly.

As we get better, the improvements become small steps, and finally, as we reach a high level, we inch just a little further, even after much learning and practice.

The ALs were designed to reflect this reality of learning. They help educators, students, and parents know how ready students are to access the curriculum at the next level.


AL	RAW MARK RANGE
1	≥ 90
2	85 – 89
3	80 – 84
4	75 – 79
5	65 – 74
6	45 – 64
7	20 – 44
8	< 20

HOW DOES THE PSLE SCORING SYSTEM WORK?

- The overall PSLE Score is made up of 4 subject Achievement Levels (ALs).
- The PSLE Score can range from 4 to 32, with 4 being the best.



Parent Engagement 2024



Elena PSLE Score 14	
PSLE Subject	AL Score
English	2
Math	2
Foundation Science	AL A = 6
Mother Tongue Language	4

GRADING OF FOUNDATION SUBJECT GRADES

- Foundation subject grades are graded in scoring bands from **AL A to C**.
- To derive a student's overall PSLE Score for S1 Posting, AL A to AL C for Foundation level subjects are **mapped to AL 6 to AL 8 of Standard level subjects respectively**.
- This mapping is based on the learning and assessment load of the subjects, and informs students of how ready they are for the curriculum in secondary school.

FOUNDATION LEVEL AL	FOUNDATION RAW MARK RANGE	EQUIVALENT STANDARD LEVEL AL
A	75 – 100	6
B	30 – 74	7
C	< 30	8

ELIGIBILITY CRITERIA FOR HIGHER MOTHER TONGUE LANGUAGE (HMTL)

- The eligibility criteria for taking HMTL ensures that students can cope with the higher academic load.

ELIGIBILITY CRITERIA FOR HMTL

- (i) An overall PSLE Score of 8 or better**
- (ii) An overall PSLE Score of 9 to 14 (inclusive); and attain**
 - AL 1 / AL 2 in MTL or**
 - Distinction / Merit in HMTL**

- For students who do not meet the above criteria, secondary schools will have the flexibility to offer HMTL to students if they are assessed to have high ability and interest in MTL, and are able to cope with the learning load required.

HOW DOES THE S1 POSTING WORK?

- Your child has **six choices** in selecting their secondary schools.
- Your child will be posted to a secondary school based on **academic merit, i.e., PSLE Score,** and their **choice order of schools.**
- If two or more students with the same PSLE Score vie for the last remaining place(s) in a school, the following tie-breakers are used in the following order:
 1. **CITIZENSHIP**
 2. **CHOICE ORDER OF SCHOOLS**
 3. **COMPUTERISED BALLOTING**
- The tie-breaker based on school choice order recognises the different considerations that families have in making school choices.








Tie-breakers

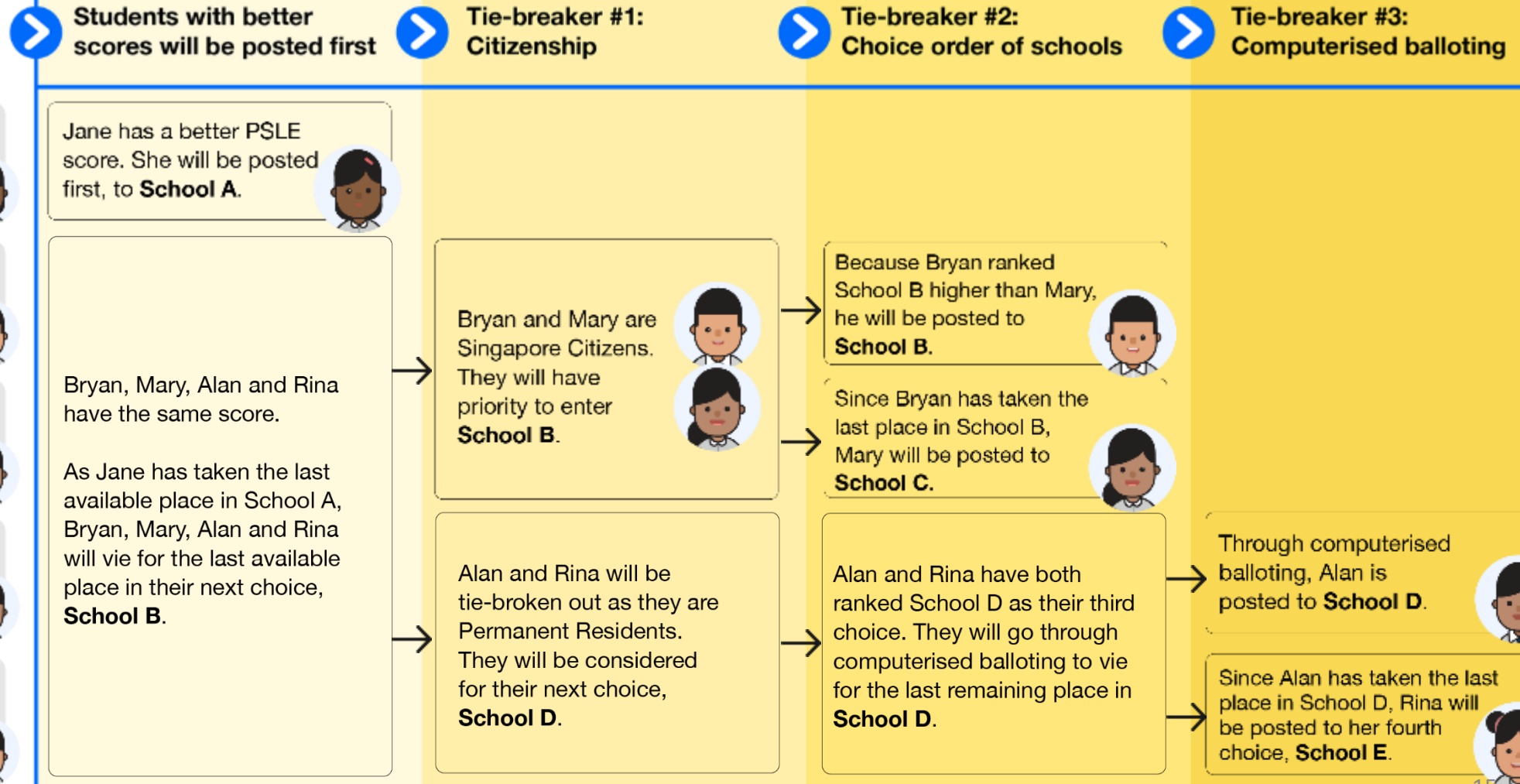
in the new S1 Posting System

Tie-breakers are used only if there are two or more students with the same PSLE Score vying for the last available place(s) in a school.

Here's a simplified example.

5 students are vying for the last places in the schools of their choice.

Jane Singapore Citizen 16 pts	SCHOOL CHOICES: 1) Sch A 2) Sch ... 3) Sch ... 4) Sch ...	
Bryan Singapore Citizen 20 pts	SCHOOL CHOICES: 1) Sch B 2) Sch ... 3) Sch ... 4) Sch ...	
Mary Singapore Citizen 20 pts	SCHOOL CHOICES: 1) Sch A 2) Sch B 3) Sch C 4) Sch ...	
Alan Permanent Resident 20 pts	SCHOOL CHOICES: 1) Sch A 2) Sch B 3) Sch D 4) Sch ...	
Rina Permanent Resident 20 pts	SCHOOL CHOICES: 1) Sch A 2) Sch B 3) Sch D 4) Sch E	



HCL POSTING ADVANTAGE TO SAP SCHOOLS

Students who obtained a Distinction/Merit/Pass for HCL at the PSLE and an overall PSLE Score of 14 or better will receive a posting advantage when applying to SAP schools.

Students will be considered for admission to SAP schools in the following order:



7

NO HCL

Students with better PSLE Scores will be posted first, even if they did not take HCL



8

DISTINCTION



8

MERIT



8

PASS



8

NO HCL

Amongst students with the same PSLE Score, those with better HCL grades will be posted first



9

DISTINCTION

- Students' HCL results are denoted as 'D' (Distinction), 'M' (Merit) or 'P' (Pass).
- Students who obtain (i) a Distinction / Merit / Pass in HCL and (ii) a PSLE Score of 14 or better are eligible for posting advantage to SAP schools.
- Students are ranked taking into account their performance in HCL.
- This posting advantage applies before the tie-breakers for S1 Posting.

Understanding Full Subject-Based Banding (Full SBB)



What is Full SBB?



Parent Engagement 2024

WHAT IS FULL SBB?

- Full SBB will be implemented in secondary schools from 2024, and aims for students to:



Have greater ownership of their learning according to their strengths, interests, abilities, talents and learning needs.



Develop a growth mindset and an intrinsic motivation to learn for life.

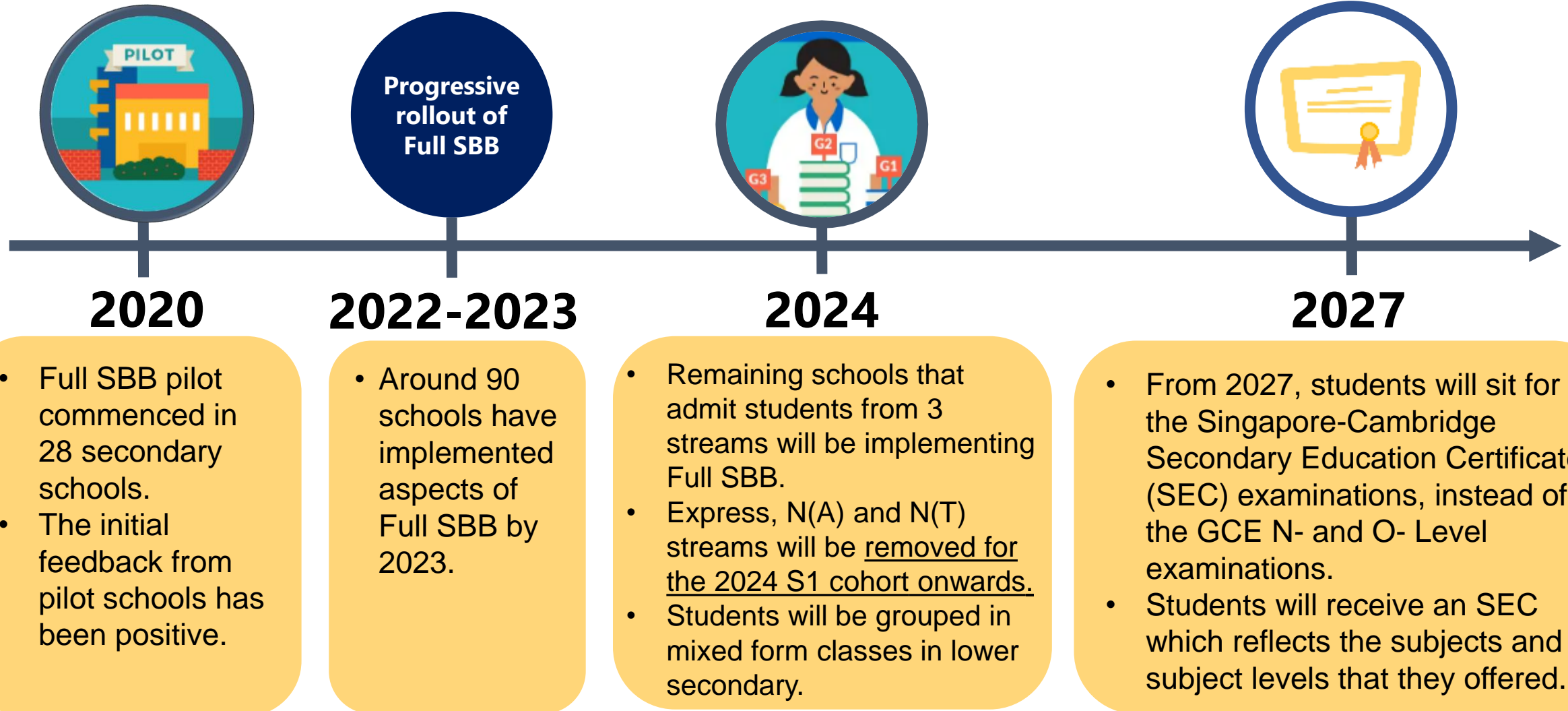


Have more opportunities to interact with friends of different strengths, interests, abilities and talents.



Have more options for post-sec pathways, while ensuring they have strong fundamentals and can thrive in their chosen pathway.

FULL SUBJECT-BASED BANDING (FULL SBB)



FULL SUBJECT-BASED BANDING (FULL SBB)

Secondary school experience under Full SBB

- **Mixed form classes** and **common curriculum subjects** at **Lower Secondary**.
- **Subjects to be offered at G1, G2 or G3**, mapped from the standards of the N(T), N(A) and Express subject levels respectively.
- **Greater flexibility** to customise students' learning by offering subjects at various subject levels.
- **Shift away from stream-based subject offerings.**

After PSLE

Start of Sec

End of Sec

Post Sec

From 2023:
Entry to S1
through 1 of 3
Posting Groups

From 2027:
Singapore-Cambridge
Secondary Education
Certificate (SEC)
examination

Updated post-
secondary admission
criteria

FULL SBB: S1 POSTING

Three Posting Groups to ensure schools are accessible to diverse learners

From the 2024 S1 cohort, MOE will facilitate the admission of P6 students into S1 through 3 Posting Groups: **Posting Group 1, 2 and 3.**

Objective: Ensures that schools continue to admit a **diverse profile of students** and students have **access to a wide range of schools.**

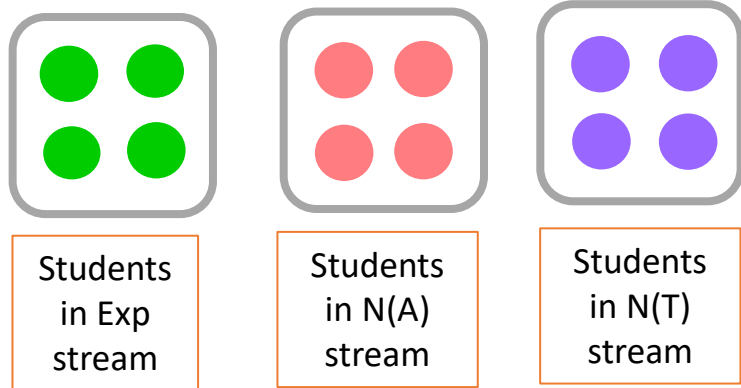
Unlike the academic streams of Express, N(A) and N(T), Posting Groups will only be used for the purposes of facilitating entry into secondary school and to guide the subject levels students offer at the start of S1.

- Posting Groups assigned based on PSLE Scores, mapped from existing PSLE Score ranges for Express, N(A) and N(T) streams.
- PSLE Scores provide a good gauge of the subject levels that students can offer at the beginning of S1.

PSLE Score	Posting Group	Subject level for most subjects
4 – 20	3	G3
21 and 22	2 or 3	G2 or G3
23 and 24	2	G2
25	1 or 2	G1 or G2
26 – 30 (with AL 7 in EL and MA)	1	G1

FULL SBB: MIXED FORM CLASSES IN LOWER SECONDARY

Form classes arranged by academic stream in schools yet to implement Full SBB



With Full SBB:
Mixed form classes



- Under Full SBB, students will be placed in mixed form classes in Lower Secondary to ensure a **mix of learner profiles**.
 - Provides students with **more opportunities** to interact with other students of different strengths and interests.
 - Enables students to **build meaningful friendships and learn to value different perspectives**.



Students posted through **PG3**



Students posted through **PG2**



Students posted through **PG1**

FULL SBB: COMMON CURRICULUM

Common Curriculum Subjects taken in mixed form classes (~1/3 curriculum time)

Examinable Subjects:

- Art
- Design & Technology (D&T)
- Food & Consumer Education (FCE)

Non-examinable Subjects:

- Character & Citizenship Education (CCE)
- Music
- Physical Education (PE)

- The six common curriculum subjects would each have a single syllabus for all students at Lower Secondary levels.
 - These subjects will be taught and assessed at a common level that is accessible to all students.
 - Teachers will adopt a range of approaches to cater to the different learning needs of their students.
- For other subjects, students attend classes with others taking the subject at the same subject level.

OFFERING SUBJECTS AT A MORE DEMANDING LEVEL AT THE START OF SEC 1

- Students posted to schools through PG1 and PG2 can offer **English Language, Mother Tongue Languages, Mathematics and Science** at a more demanding level based on their PSLE AL for each subject.

FOR STUDENTS POSTED TO SCHOOLS THROUGH PG1 AND PG2			
SUBJECT	PSLE SUBJECT LEVEL	PSLE AL FOR SPECIFIC SUBJECT	OPTION TO TAKE THE S1 SUBJECT AT :
<ul style="list-style-type: none"> • English Language • Mother Tongue Language • Mathematics • Science 	Standard	AL 5 or better	G3 or G2
		AL 6	G2
	Foundation	AL A	G2

OFFERING SUBJECTS AT A LESS DEMANDING LEVEL AT THE START OF S1

- For students who offered **English Language, Mathematics and/or Science** at Foundation level at PSLE, but are otherwise eligible to take most of their subjects at G3 when entering secondary school, they may choose to take these subjects at a less demanding level (LDL; i.e., G2), in consultation with their secondary schools.
- Students have the option to offer **Mother Tongue Languages (MTL)** at LDL based on their PSLE Achievement Level (AL) for the subject:

POSTING GROUP (PG)	PSLE AL FOR MTL [^]	OPTION TO OFFER MTL AT A LESS DEMANDING LEVEL
PG3	AL 6	G2
	AL 7-8	G1 or G2
PG2	AL 7-8	G1

[^] Foundation level AL A to AL C will be mapped to AL 6 to AL 8 of Standard level subjects respectively.

- Students who are eligible to offer MTL at LDL can still choose to offer MTL at-level if they prefer.

SUBJECT LEVEL FLEXIBILITY BEYOND THE START OF S1

- Beyond the start of Sec 1, students may **adjust their subject levels across their secondary school journey**.
 - Students may offer subjects, including English Language, Mother Tongue Languages, Mathematics, Science and Humanities subjects at a **more demanding level** if they meet the criteria and based on the school's holistic considerations.
 - Students who are not coping well may **offer subjects at a less demanding level**, based on their school-based performance and school's holistic considerations, to calibrate their curricular load.
 - In upper secondary, students may offer elective subjects (for example, Additional Mathematics, Art, Design & Technology) at a subject level suited to their strengths, interests and post-secondary aspirations, to **allow them to pursue their interests without adding unduly to their overall curriculum load**.
- Schools will consider **students' learning progress and developmental needs** when helping them determine their subject choices.

Choosing Suitable Secondary Schools

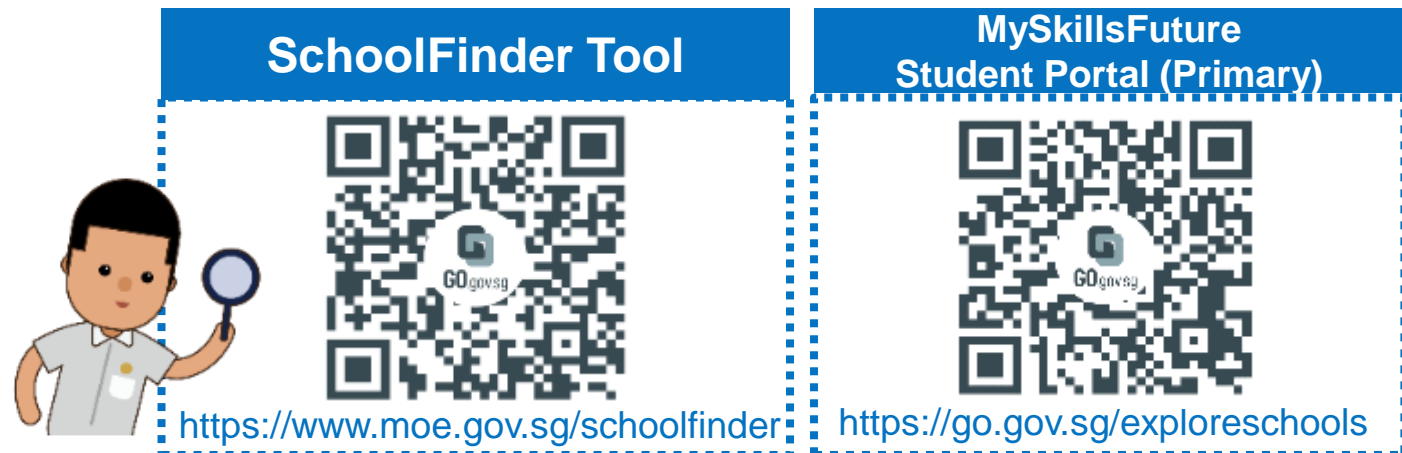
Factors to Consider

Preparing for S1 Posting Exercise



PSLE SCORE RANGES FOR ALL SECONDARY SCHOOLS

- Use the PSLE Score ranges as a reference alongside other important factors, such as the school's distinctive programmes, Co-Curricular Activities (CCA), culture, ethos, and proximity to home when shortlisting school choices that would best fit a student's educational needs.
- The PSLE Score ranges for individual secondary schools will be available for your reference on <https://moe.gov.sg/schoolfinder> and <https://go.gov.sg/exploreschools>. They reflect the PSLE scores of the students posted into these schools at the previous year's S1 Posting Exercise.
- A school's PSLE Score range (including Cut-Off-Point) for a particular year is not pre-determined before the posting, and vary from year to year, depending on the cohort's PSLE results and their school choices in that year's S1 Posting Exercise.



HOW DO WE INTERPRET THE PSLE SCORE RANGES?

The PSLE Score range refers to the PSLE Score of the first and last student admitted to a particular school in the previous year via the S1 Posting Exercise. This shows the range of student profiles who enter each school.

Example

XX Secondary School

PSLE Score range of 20XX (previous year's S1 Posting Exercise)

Posting Group 3	15 – 20
Posting Group 2	21 – 24
Posting Group 1	25 – 28

PSLE Score of the first student posted into the school in the respective PG.

PSLE Score of the last student posted into the school in the respective PGs [i.e., the school's **Cut-Off Point (COP)**].

Note: Posting Groups will be assigned based on PSLE Scores, mapped from existing PSLE Score ranges for Express, N(A) and N(T) streams.

EXAMPLE OF AN SAP SCHOOL'S PSLE SCORE RANGE

While students need not take HCL to enter SAP schools, students who pass HCL receive a posting advantage for admission. To reflect this, the PSLE Score ranges of SAP schools include the HCL grades of the first and last student admitted in the previous year via S1 Posting.

Example

XX Secondary School

PSLE Score range of 20XX (previous year's S1 Posting Exercise)

Posting Group 3	5 (D) – 12 (P)
Posting Group 2	
Posting Group 1	

PSLE Score and HCL grade of the first student posted into the school through PG3.

PSLE Score and HCL grade of the last student posted into the school through PG3 [i.e. the school's Cut-Off Point (COP)].

SCHOOL CHOICE JOURNEY

- The PSLE Score ranges are a **useful starting point** for parents and students to consider secondary schools.
- Use this information, together with other **important factors** such as the secondary schools' distinctive programmes, CCAs, ethos and cultures, to shortlist schools that would best fit the educational needs of the student.



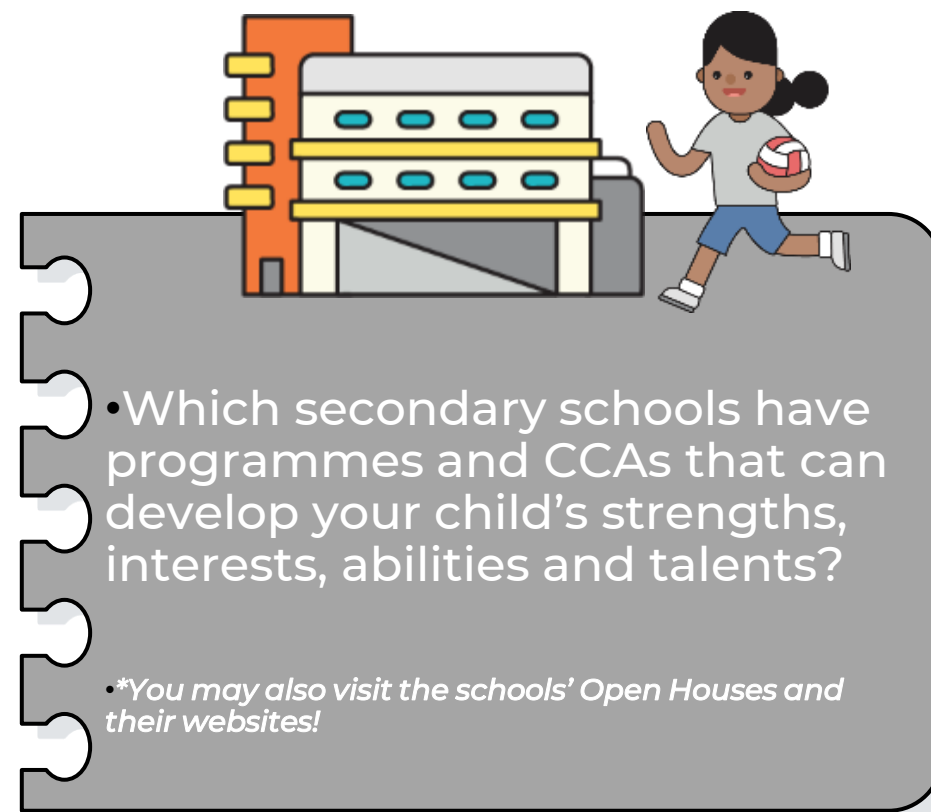
WHICH SCHOOLS SHOULD MY CHILD SHORTLIST?



•What are your child's interests?

•What does your child enjoy doing?

Want to know more about yourself?
Embark on a journey in **Career Quest** on
the [MySkillsFuture Student Portal](#)
(Primary) now!



•Which secondary schools have programmes and CCAs that can develop your child's strengths, interests, abilities and talents?

**You may also visit the schools' Open Houses and their websites!*

Want to learn more about different schools? Explore the **Education Guide** on
the [MySkillsFuture Student Portal](#)
(Primary) now!

IMPORTANT FACTORS TO CONSIDER WHEN CHOOSING SECONDARY SCHOOLS

01 SCHOOL CULTURE



What is the school's culture and ethos?

02

LEARNING ENVIRONMENT



How do I feel about the school based on what I saw at the Open House?

03

PROGRAMMES



Does the school have programmes I would enjoy?

04 CCAs



Are there CCAs that interest me and can nurture my strengths, abilities and talents?

05 SUBJECTS

What subjects are offered in the school?



06

LOCATION

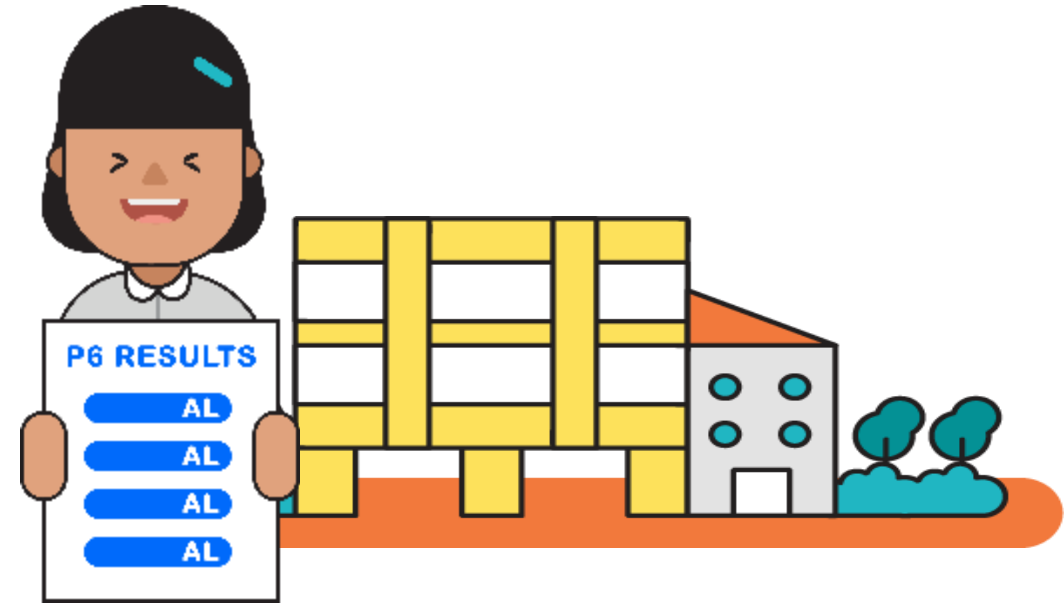


How long will it take for me to travel to school and back home?

PREPARING FOR THE S1 POSTING EXERCISE

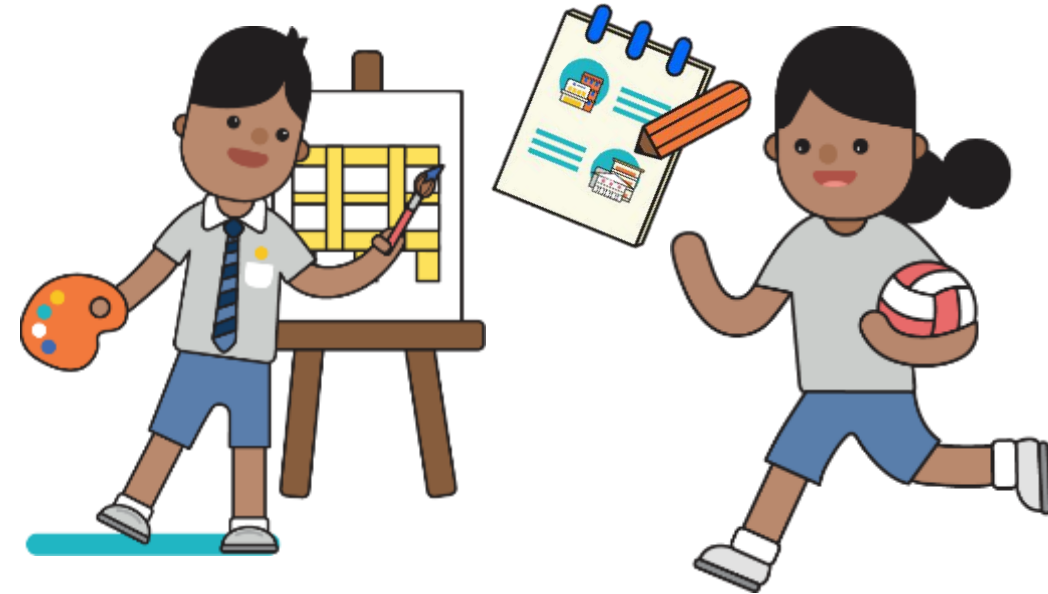
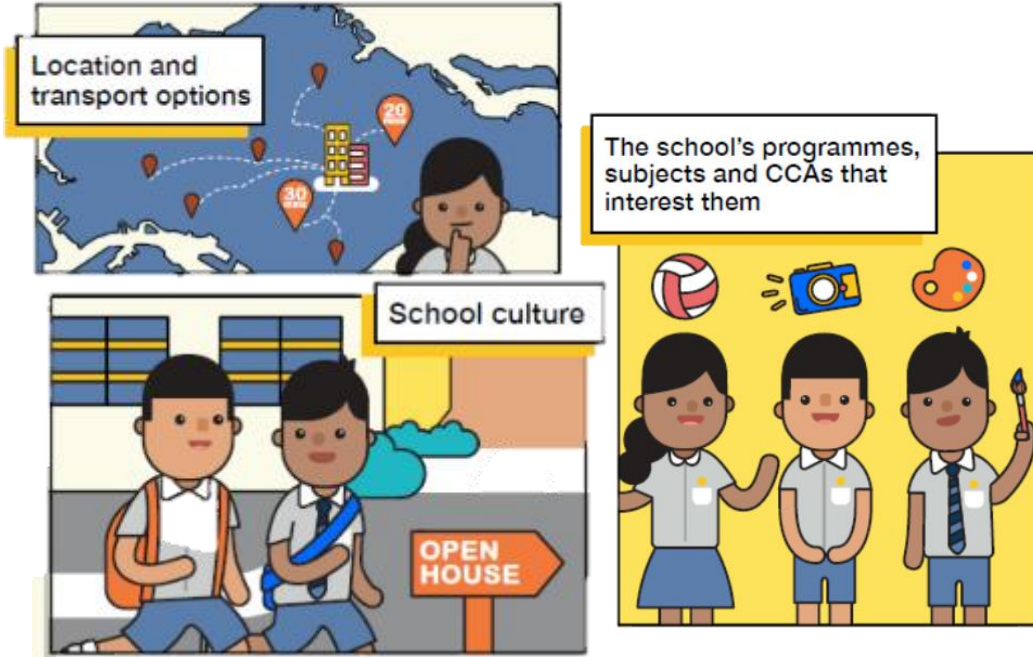


Use all 6 options with a range of Cut-off Points as this will increase your child's chances of being posted to a school of their choice.



Take reference from schools' PSLE Score ranges, which serve as a guide for you and your child to shortlist school choices. Consider at least 2-3 schools where your child's PSLE Score is better than the school's Cut-off Point.

PREPARING FOR THE S1 POSTING EXERCISE



Shortlist schools that offer programmes that cater to your child's strengths, interests, abilities, talents and learning needs, as well as provide suitable learning environments.

Rank your child's preferred school higher in the choice order of schools. This will increase your child's chances of being posted to that school, if they need to undergo tie-breaking.

TIPS FOR PARENTS!

Be open and flexible when discussing your child's preferences, needs and choices.

Manage your own expectations and do not project these expectations onto your child.

Have regular conversations with your child to understand more about his/her strengths, interests, abilities, talents and aspirations.

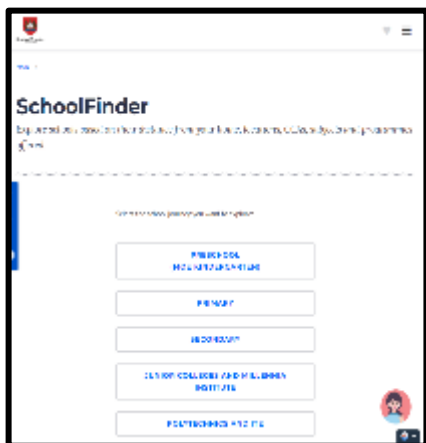


Affirm your child and offer support when he/she shares his/her plans with you.

PREPARING FOR THE S1 POSTING EXERCISE

SCHOOL
FINDER

MySKILLSfuture



- Release of **S1 Posting results**



- Release of **PSLE results**
- Online Submission of **S1 School Choices and Options**



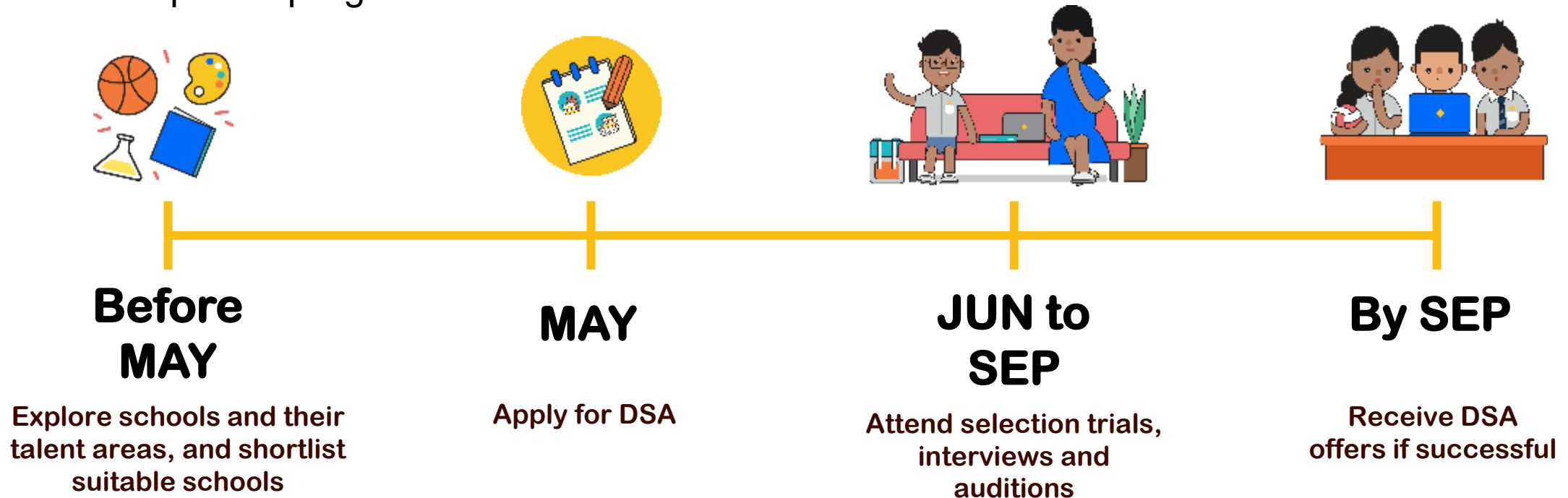
OCTOBER

NOVEMBER

DECEMBER

ENTERING SCHOOLS THROUGH DSA-SEC

- There is no change to the application and selection process with the shift to Full SBB.
- If your child has specific talents and strengths beyond the PSLE (e.g. areas such as sports, performing arts and leadership), consider the **Direct School Admission-Secondary (DSA-Sec)** as an alternative admission pathway to access secondary schools that have talent development programmes in these areas.



Useful resources

Quick tips on shortlisting secondary schools

A SECONDARY SCHOOL THAT'S SUITABLE FOR YOUR CHILD
Help them match the school to their strengths and interests.

ASK:
What are their strengths, interests, and abilities?
- What kind of courses, programmes and opportunities will develop these?
- Is the pace of learning suitable for them?

CONSIDER:
- School Culture
- Courses
- Programmes, Subjects and CCAs Offered
- Location and Transport
- If your child has Special Educational Needs
Select schools with specialised facilities or resources.

SUBMIT:
- 6 School Options
So that your child is more likely to get into a school of choice.
- Schools with Different Cut-Off Points
Consider at least 5-6 schools where your child's CUP is better than the school's Cut-Off Point.

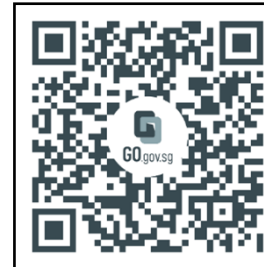
REFER TO:
MOE's SchoolFinder
Check out schools' breadth of subjects offered, Co-Curricular Activities, location and contact information.

YOUR RANK OF SCHOOL CHOICES
The higher you rank your choice, the better your chance of getting into that school.
Score ranges can vary from year to year, since they depend on each child's performance and other factors.

Tools to use to explore secondary schools

SCHOOL FINDER

MySKILLSfuture



How-to-Guides to equip parents on how to use the tools

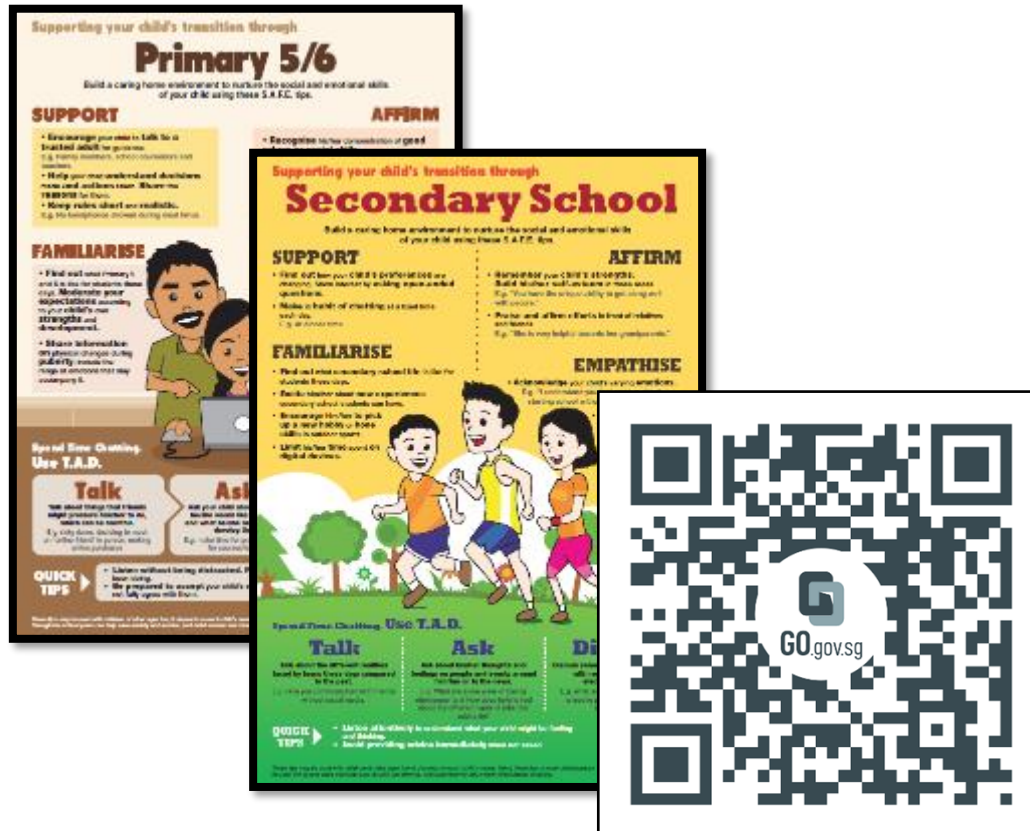
How to Use SchoolFinder
Ministry of Education SINGAPORE

<https://go.gov.sg/school-finder>

QR code linking to the guide.

Useful resources

Transition Materials



Resilience Boosters



FIND OUT MORE ON THE PSLE-FSBB MICROSITE



<https://go.gov.sg/pslefsbb>



EXPLORE YOUR FULL SBB PATH



<https://go.gov.sg/my-fsbb-path>

OTHER RESOURCES

SchoolFinder Tool

**SCHOOL
FINDER**



<https://go.gov.sg/secschoolfinder>

“Welcome to Secondary School” video



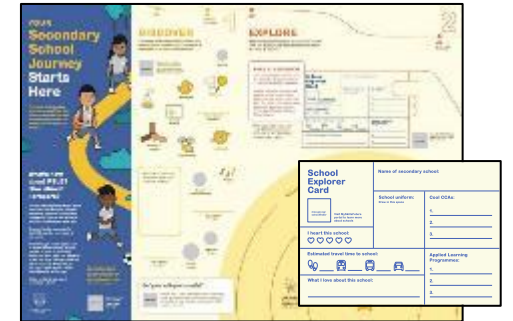
<https://go.gov.sg/welcome-to-secondary-school>

Secondary School Education Booklet



<https://go.gov.sg/psle-sec-sch-brochure>

Student Journey Map and School Explorer Card



<https://go.gov.sg/psle-student-journey>

OTHER RESOURCES

ECG Tips For Parents



<https://go.gov.sg/tips-for-parents>

MySkillsFuture Student Portal (Primary)

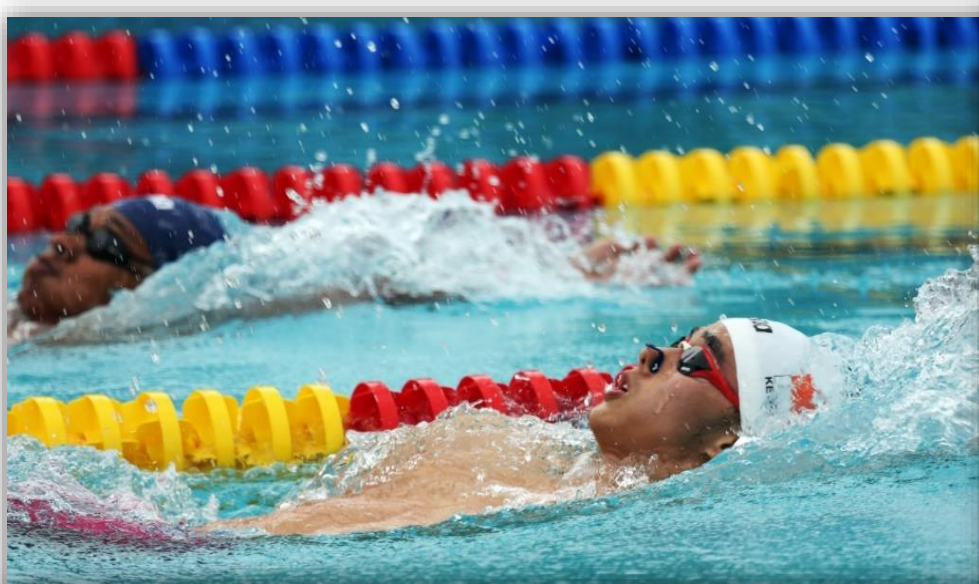


<https://go.gov.sg/mysfpri>

ECG What's Next



<https://go.gov.sg/whats-next-psle>



Direct School Admission for Secondary Schools (DSA-Sec)

Entering a secondary school



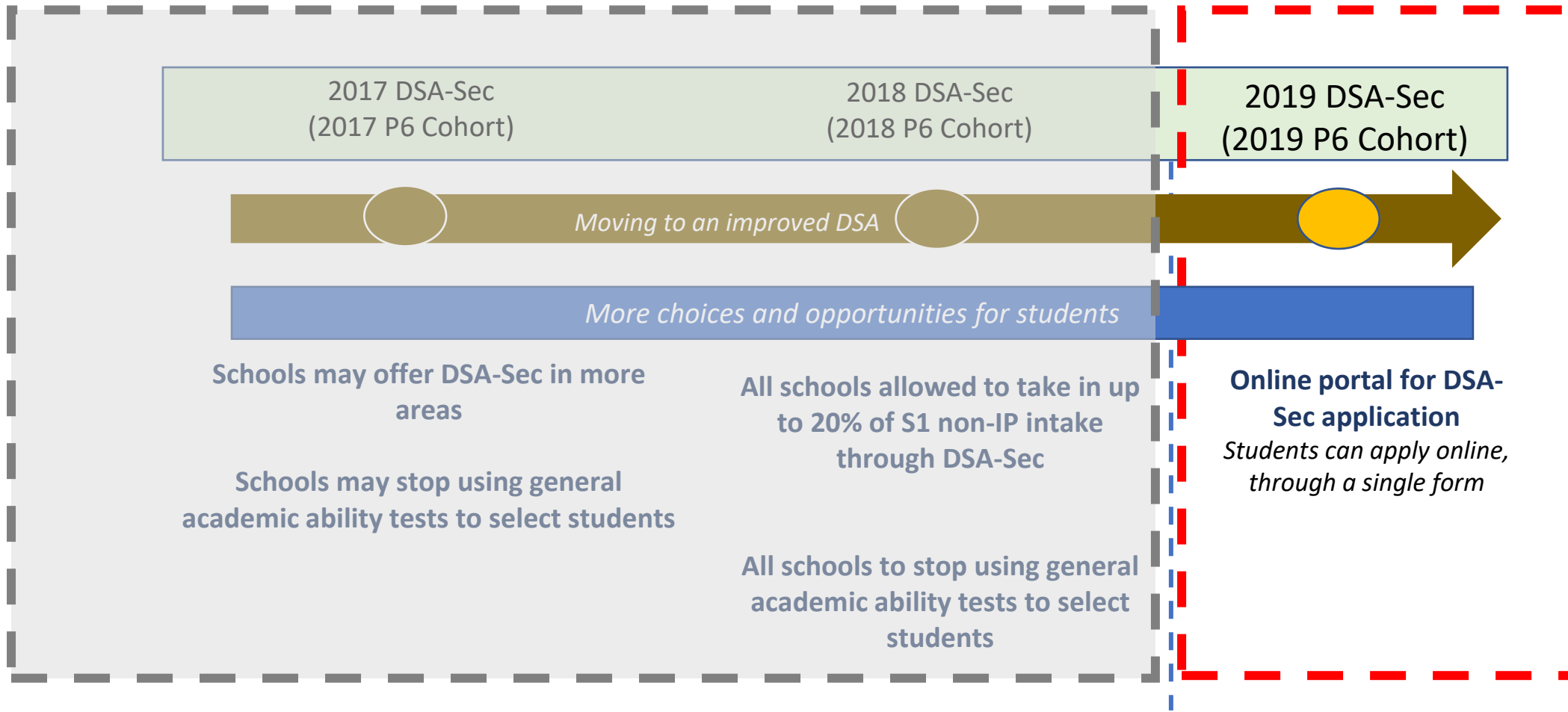
PSLE/S1 Posting Process

- Based on a student's **PSLE score**
- **Most students enter secondary schools this way**

DSA-Sec

- Based on a diverse range of **talents and achievements in specific academic subjects or non-academic areas, beyond what the PSLE recognises**
- Allows students to **access school programmes to develop their talents**

Changes to the DSA-Sec



What is the timeline for a typical DSA-Sec Exercise?

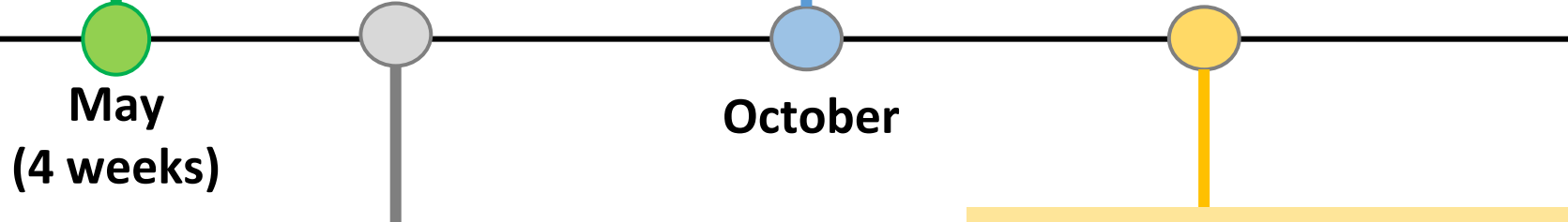


Apply for DSA-Sec through **DSA-Sec Application Portal**.

Rank your offers, if you receive offers from multiple schools

July - August

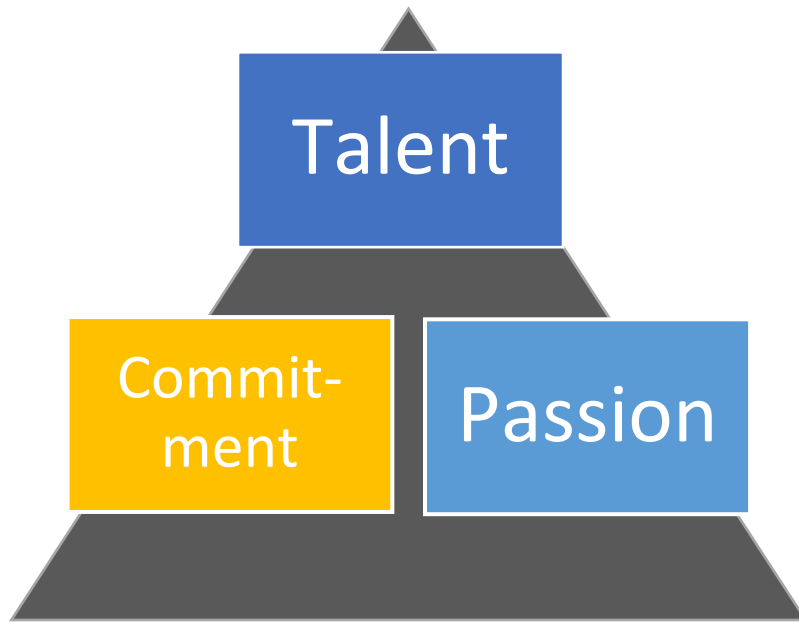
Late-November



Shortlisting and selection by secondary schools. Each secondary school has different selection criteria for its categories and programmes. Schools will inform you of the selection outcome **by Aug**.

You will know whether you have been allocated to a school through the DSA-Sec, at the same time you receive your PSLE results.

Is the DSA-Sec right for my child?



If your child has specific **talents** which a school offers the DSA-Sec in

And is **passionate** about and **committed** to developing his/her strengths and interests

DSA-Sec can support his/her development in that talent area.





Which school should my child apply to?

- Look for a school with **programmes that match your child's strengths and interests**
- **Get the latest information** about what each school offers by:
 - Visiting schools' websites
 - Attending schools' Open Houses to also experience their environments and cultures
 - Visiting the MOE's DSA-Sec website



DSA-Sec Application Portal

- To encourage students to tap on the expanded DSA opportunities, the DSA-Sec application process will be simplified
- Students will be able to apply for DSA through a centralised **DSA-Sec Application Portal**, using a common application form.
- The portal will simplify and streamline the DSA application process, making it convenient for all students.



Features of the DSA-Sec Portal



1. Centralised online applications

- Centralised Application
- No need to **submit testimonials or hardcopy documents** to the secondary school .

2. Application using Singpass

3. No application fees

- No fees charged for DSA-Sec application and selection.
- We encourage all students who are passionate about and committed to developing particular talents to apply, regardless of family backgrounds.



Features of the DSA-Sec Portal

4. Making choices in the DSA-Sec portal

- Through the portal, you can easily identify schools that offer programmes for your child's talent area.
- You can indicate up to three choices. For each choice, you will need to choose a secondary school and a talent area from that school.
- The order of the choices does not matter during application.

Note. Students can apply separately to School of the Arts and Singapore Sports School, on top of the DSA-Sec choices made through the DSA-Sec Portal.



Examples of Possible Choice Combinations



EXAMPLE 1	Talent(s)	School(s)
	Choir	School A
	Choir	School B
	Choir	School C

EXAMPLE 2	Talent(s)	School(s)
	Choir	School A
	String Orchestra	School A
	Choir	School B

EXAMPLE 3 (Not allowed)	Talent(s)	School(s)
	Choir	School A
	String Orchestra	School A
	Mathematics	School A

Your child can apply to up to three different schools, with no restrictions on the talent areas.

If your child chooses two areas in one school, he/she can apply to **two different schools only**,

Your child cannot use all three choices on one school. He/she can leave the third choice blank or choose another school.

What are schools looking for?



- Schools have updated their selection practices, which are based on a common set of student-centric principles, with more emphasis on looking for sound fundamentals and potential in particular talent areas.
- The DSA-Sec selection process remains objective and talent-specific.



What are schools looking for?

- The selection process differs across schools, and across different DSA-Sec categories.
- Generally, schools are looking for candidates with:

Talent, passion, commitment	Strong personal qualities	Good academic fit
<p>Schools may look at achievements and participation (e.g. in Junior Sports Academy).</p> <p>Schools may also conduct tests, trials or selection camps to identify students with strengths, or sound fundamentals and potential, in particular areas.</p>	<p>Schools may look at CCA records and VIA participation. Schools may also conduct interviews.</p>	<p>Schools may look at primary school results to ensure students can benefit from the school's pace of learning.</p>

What are the possible DSA-Sec outcomes?



- Confirmed Offer (CO)
- Wait List (WL)
- Unsuccessful



Where can I find more information on DSA-Sec?

- Check the [MOE DSA-Sec website](#) for important dates and timelines, and for information on how DSA-Sec will be conducted.
- The MOE DSA-Sec website also contains information on DSA categories and secondary schools offering them.





Parent Engagement 2024

THANK YOU!